

Danelec systems
Solid · Safe · Simple

DM800 ECDIS

Electronic Chart Display & Information System



HIGHLIGHTS

Danelec Marine ECDIS products are best-in-class in user-friendliness and are the most robust ECDIS products in the market.

Extreme reliability

- ▶ ECDIS specific computer, developed for maritime use
- ▶ Designed with no moving parts and a solid-state hard disk

Cost-effective

- ▶ Easy to install and designed to minimize service time and operations cost
- ▶ Helps optimize navigation, reduce risk, save valuable time and can reduce fuel consumption
- ▶ Pay-as-you-go chart option

Service friendly

- ▶ "Hot swap" design which makes servicing easy
- ▶ Due to the simplicity of the system, spare parts can easily be replaced by the ship's own crew
- ▶ Supported by Danelec Marine's worldwide service network

Intuitive and user-friendly

- ▶ Intuitive interface and logic menu structure
- ▶ Built in user manual and on-line help
- ▶ Easy update of sea charts, minimizing cost and time involved

Ideal for retrofit installation

- ▶ Compact and flexible construction designed for quick and easy installation on existing ships
- ▶ Well suited for all types of ships
- ▶ Can easily integrate with relevant information sources, like GPS and radar

ELECTRONIC CHART DISPLAY AND INFORMATION SYSTEM

An Electronic Chart Display and Information System (ECDIS) is a computer based navigation system used as an alternative to paper navigation charts. Integrating a variety of real time information, it is an automated decision aid, capable of continuously determining a vessel's position in relation to land, charted objects, navigation aids and unseen hazards.

The ECDIS includes electronic navigational charts (ENC) and integrates information from the Global Positioning System (GPS), speed log, gyro and potentially other navigational sensors, such as e.g. radar, fathometer and automatic identification systems (AIS).

Ships engaged on international voyages are by IMO's Maritime Safety Committee regulations in 2009 required to be fitted with ECDIS and approved back-up system according to flag state approach and according to the below timetable:

| Ship Type | Size | Installation mandatory from |
|-------------------|--------------------|----------------------------------|
| Passenger vessels | > 500 GT | Mid 2012 (new) / 2014 (existing) |
| Tankers | > 3000 GT | Mid 2012 (new) / 2015 (existing) |
| Cargo Vessels | > 3000 GT | Mid 2014 (new) |
| | 10.000 - 20.000 GT | Mid 2013 (new) / 2018 (existing) |
| | 20.000 - 50.000 GT | Mid 2013 (new) / 2017 (existing) |
| | > 50.000 GT | Mid 2013 (new) / 2016 (existing) |

DANELEC MARINE ECDIS RANGE

The Danelec Marine ECDIS range is designed based on valuable feedback from ship owners and long time users of ECDIS products. Inspired by customer needs, the innovative Danelec Marine ECDIS range is developed to meet the specific requirements of the maritime industry.

By receiving precise information about the position of the ship, the ECDIS can help make navigation easy and significantly improves safety at sea. The system includes intuitive route planning functions, ensuring optimal navigation routes, which in turn can lead to reduced fuel consumption.

- ▶ Precise real time positioning and route monitoring including information from interfaced sensors
- ▶ Advanced route planning function
- ▶ Radar overlay with on screen radar control
- ▶ Recording and playback of voyage
- ▶ Easy chart update via internet, email or DVD
- ▶ Audio and visual alarm functions
- ▶ Intuitive menu structure for easy operation with "built-in" user manual and online help



Danelec Marine VDR systems are Wheelmark approved, and meet the requirements of IMO performance and IEC standards.

FACT SHEET

Console

Dimensions

W: 64 cm
H: 145 cm
D: 74 cm
W: 128 kg

Specifications

AC Power (110V-230V)
Complete ECDIS console, with:
ECDIS Main Unit
Monitor
Keyboard / trackball



ECDIS Main Unit

Dimensions

W: 35 cm
H: 29 cm
D: 21 cm
W: 7.5 kg

Specifications

AC Power (110V-230V)
Built-in DVD drive
Interfaces:
12 serial channels
4 Ethernet interfaces,
8 USB, DVI / VGA



19.0" Monitor

Dimensions

(Flush mounting / Stand)
W: 47 / 49 cm
H: 42 / 47 cm
D: 7 / 45 cm
W: 11 kg (with stand)
14 kg (with turntable)

Specifications

AC Power (110V-230V)
Inputs: DVI-I, VGA,
Composite video, S-Video
Waterproof: IP64 (when
installed in console)



21.3" Monitor

Dimensions

(Flush mounting / Stand)
W: 56 / 56 cm
H: 46 / 51 cm
D: 8 / 49 cm
W: 14 kg (with stand)
17 kg (with turntable)

Specifications

AC Power (110V-230V)
Inputs: DVI-I, VGA,
Composite video, S-Video
Waterproof: IP64 (when
installed in console)



23.1" Monitor

Dimensions

(Flush mounting / Stand)
W: 60 / 62 cm
H: 53 / 57 cm
D: 8 / 55 cm
W: 18 kg (with stand)
23 kg (with turntable)

Specifications

AC Power (110V-230V)
Inputs: DVI-I, VGA,
Composite video, S-Video
Waterproof: IP64 (when
installed in console)



Keyboard / trackball

Dimensions

W: 48 cm
H: 22 cm
D: 6 cm
W: 3.5 kg

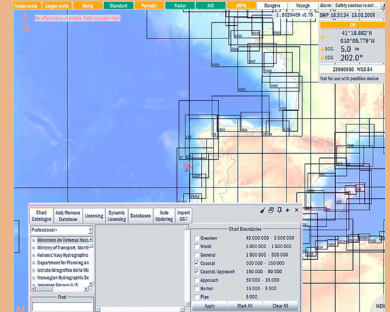
Specifications

50 mm trackball
Black epoxy resin ball
Power requirement:
from USB port



Electronic Sea Charts

Danelec Marine ECDIS products provide the professional mariner with a powerful navigation solution with vital voyage information.



The electronic sea chart solutions are extremely intuitive and user-friendly, and meet the increasing demands for both secure optimization and safety, while improving and simplifying work on the bridge.

Danelec Marine ECDIS solution supports chart distribution in both ENC and SENC format.

ECDIS familiarization training

Danelec offers ECDIS type specific training both as class room training and as computer based training (CBT).

ECDIS type specific class room training is offered in all major markets by qualified training centres. Please consult our website for more information.

ECDIS computer based training is offered to all users. Training can be conducted off-line and does not require Internet access. Please consult your distributor for more information.

Worldwide network

Recognizing the importance of global support, Danelec Marine has a worldwide network of trained and certified distributors and service centres in more than 50 countries, enabling timesaving and cost-effective installations, maintenance and annual performance tests.



Solid operation at sea

Designed to meet the unique challenges of the maritime world, our products offer proven reliability even under extreme conditions.

Safe everywhere, every time

Efficient global service network delivers high quality support wherever your ships go 24/7.

Simple

Intuitive in use and easy to install, Danelec Marine solutions offer cost-effective performance. The simple choice for meeting today's business requirements.



Danelec Marine A/S

Blokken 44
3460 Birkerød, Denmark
Tel. +45 4594 4300
sales@danelec-marine.com
www.danelec-marine.com