

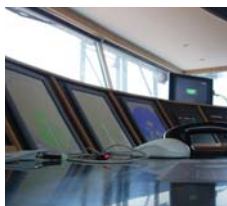
The standard for inland Navigation !

Navigis River has been the standard for inland navigation since many years. The standard on board of thousand (retrofitted and and new build) vessels. Reason? User friendly and easy to use navigation technology.

The position of the vessel will be displayed on the chart by GPS. Everything that you might need for the purpose of navigation will be displayed on the chart. With a simple click of the mouse, one can call up extra information, which means that the chart will always provide a good overview. Extra information, such as course, speed, VHF channels, etc., will be displayed in a separate window.

Navigis River

- The Standard in Navigation technology
- Inland ECDIS – Charts
- Ris – Technology
- Option AIS
- Option Radar Overlay



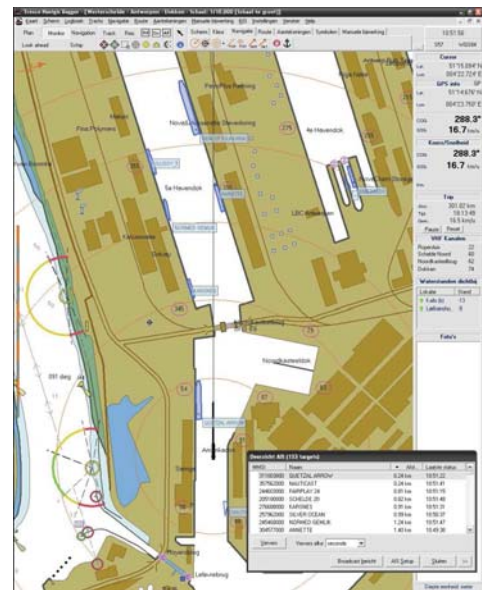
RIS: Realtime waterlevels & messages

Various applications, which will become standard in the future for inland navigation, have already been implemented in Navigis.

'River Information Services', better known as RIS, is hot in the digital maritime world. It enables you (via an internet connection) to collect the water levels via the TRESKO RIS server and to process them into the chart. Furthermore, shipping messages and weather information are displayed on the chart.

AIS: recognize other vessels (option AIS)

With the AIS option and a transponder you can see other vessels on the chart (MMSI, course, speed and European no.), to request simple shipping reports and to send messages.



Radar Overlay (option Radar-Overlay)

The integration of radar image and electronic charting system brings all the benefits together into one system. Other shipping vessels become visible on the chart, false echoes are distinguished from real ones in the blink of an eye, and all nautical information remains visible on the chart.



Features :

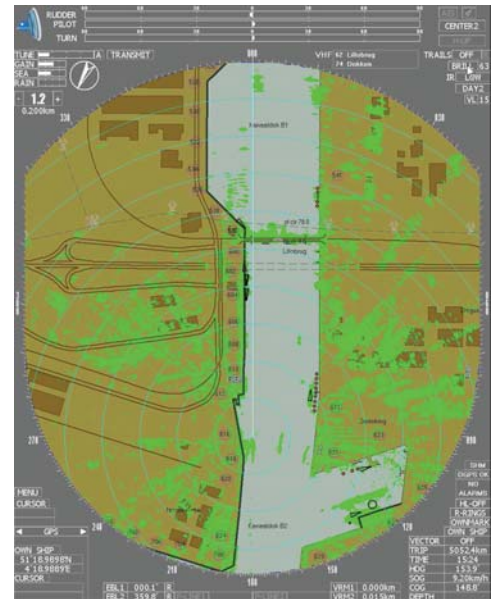
- Course-up or North-up orientation
- True Motion
- 3D View
- Automatic logbook & logbook simulation
- Advanced tracking features & event registration
- Making annotations and notes on the charts
- Automatic display of VHF channels
- Automatic retrieval of symbols, boards, data of locks and bridges
- Day / twilight / night colours with extra slide bar for luminance adjustment
- Display up-to-date depths based on water depth and water level readings, receiving shipping messages via the TRESKO RIS server.
- Extensive search function

Options :

- AIS
- Radar-Overlay
- 2e GPS, gyro

System requirements :

- PC , 2Ghz, 2 GB Ram
- 1 free com or USB port
- 1 LPT (printer) or USB port
- SVGA monitor (res. 1024 x 768)
- 1 GB Free disk space
- CD-ROM / DVD-ROM
- Microsoft 2000, XP, VISTA, W7 or Mac OSX
- GPS with NMEA-0183 output



The Standard

Tresco follows the Inland ECDIS standard of the Rhine & Donaucomission. With the approval of the Radar Overlay, Tresco is the first company in the world who can offer approved navigation software for both Inland & Sea going vessels.

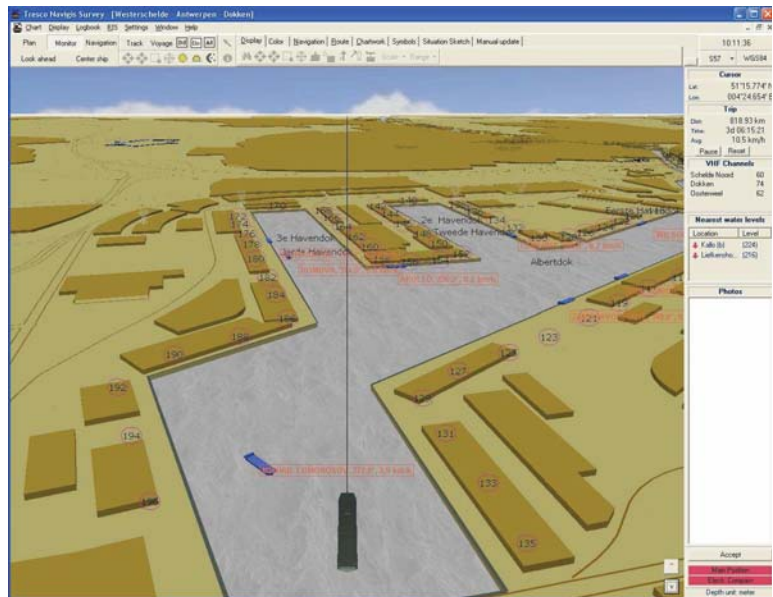


The World in real

A chart image displayed with the horizon, targets who slide gently by, objects as in the real world, this is the Tresco 3D view.

Tresco Engineering is the pioneer in 3D navigation software. The 3D view can be subscribed as 'unique'. An object close to the ship will be displayed bigger than objects further away. The functions 'zoom in / out', will be no longer necessary with the Tresco 3D view.

3D Navigation



Briefly speaking, with Navigis on board the inland navigation entrepreneur is prepared for the future!

