

ALPHATRON

Alphatron Marine

The human touch in technology

- *ECDIS*
- *ECS*
- *Conning screen*
- *Ship speed info system*



Alphatron ALPHACHART T ECDIS

Type approved ECDIS system powered by TRANSAS

The ALPHACHART T is an advanced Electronic Chart Display Information System powered by Transas and the easiest to operate. Having evolved in 1999 from the first ECDIS worldwide to hold a type approval certificate, it is the result of Transas' long standing experience in the field of marine navigation and is capable of meeting the demands and requirements of the professional navigator.

ALPHACHART T ECDIS can be used both as a stand-alone system and as part of an Integrated Bridge System and now comes with the latest standard capabilities.

The system can be installed on newly built ships, or existing vessels can be retrofitted with the ECDIS system. A dual ECDIS system may legally replace paper charts on board. The system is able to use IC-ENC, primary and UKHO's ARCS raster charts as well as other S-57 vector cartography. A non-type approved ECS version is available under the name ALPHACHART COASTER T.

MAIN FEATURES

Safe Navigation and Easy Operation

Always about safety, ALPHACHART T ECDIS excels at giving you all the information you need when you need it, via the user-friendly menu system helping you to use the system intuitively.

Savings

Direct effect on fuel consumption, voyage times & work time.

Planning and Forecasting

Powerful tools for passage planning, weather routing and calculation and environmental tide and current databases. Weather forecast with the optional SPOS weather and route planning tool, are integrated.

Playback Functions

The following playback options are available:

- Playback of the recorded own ship track and motion parameters
- Playback of the recorded targets tracks received from the ARPA and AIS
- 12 hours log acc requirements

Choice and Customization

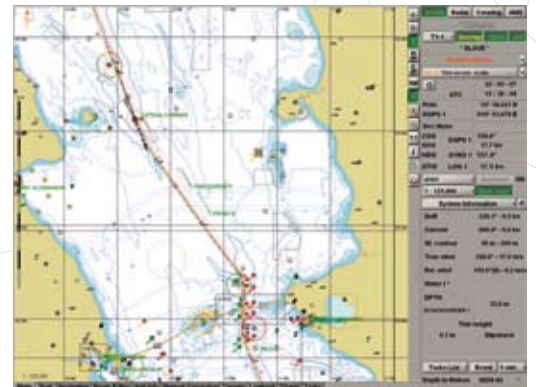
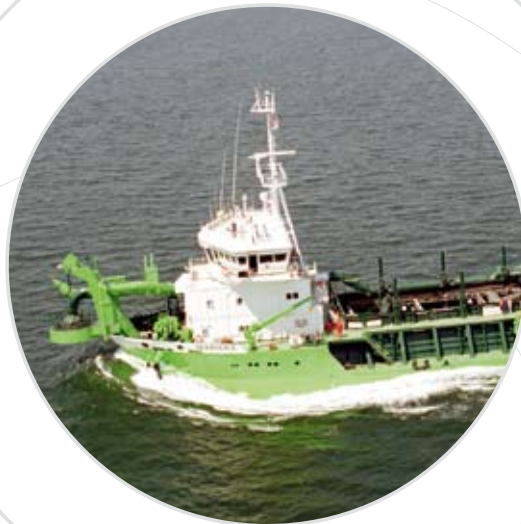
New and practical options enable you to customize the system to meet your needs including multiple operation modes with charts in up to 7 different formats and a full keyboard roller ball option.

Sensor Integration

Connects all available onboard navigation data sensors and systems, such as: two positioning systems, gyro, log, two ARPA's, AIS echo sounder, autopilot NavTex and many more.

Information system and Decision Support

A Continual flow of information for presentation of the crucial and most needed navigational information and objects, keeps you informed of any situation.



NavTex Manager

ALPHACHART T automatically reads off message supplied by the Navtex system, processes them and then integrates them into the Electronic Chart, displaying all the information with necessary zone and message mark alarms.

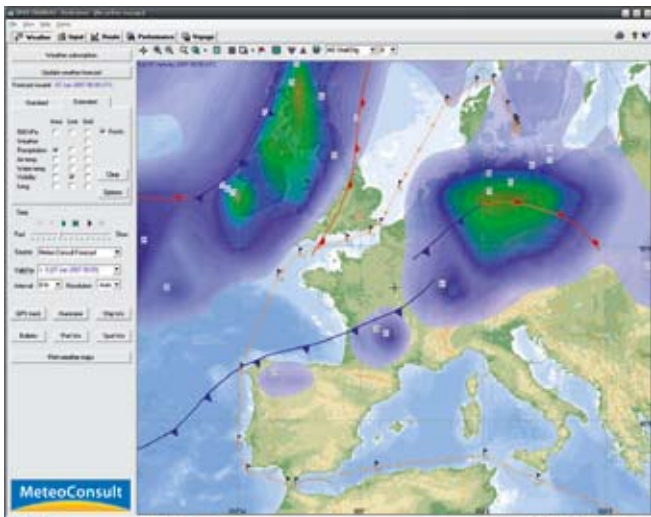


SPOS WEATHER MODULE

The new convenient onboard SPOS weather and weather route planning tool enables users to receive weather forecasts supplied by Meteo Consult via e-mail daily. The SPOS permits:

- To receive up to 9-days forecasts with the world-wide coverage
- To subscribe, receive and display the forecasts twice a day
- To calculate various routes taking into account the weather conditions
- To create optimal routes and export them back to NaviSailor ECDIS
- To compare the routes results
- To save the best route as Voyage Plan and update daily if required

SPOS has been designed to minimize operational costs. It provides detailed weather information onboard and supports the vessels staff during the planning and execution of the passages.

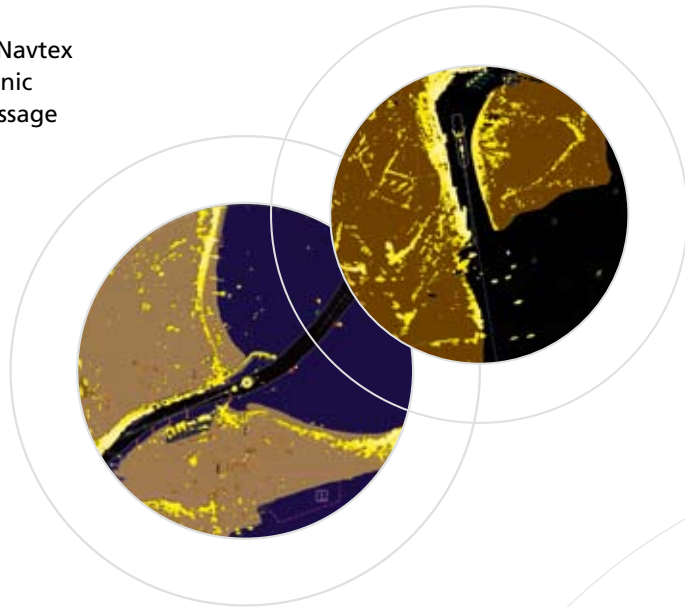


ALPHACHART –Radar Overlay

ALPHACHART can incorporate the Transas radar processor board, which receives a signal from the radar, subjects the received signal to digital processing and forms a data array for overlaying a radar picture on the electronic chart.

SEETRAC INTERFACE

- Seetrac integrated module tracks the position of each tender, jet ski and wet bike operating around the host yacht in ALPHACHART T ECDIS
- Data transmitted through the air from the tender gives tender position, speed, course, and optionally depth, wind and MOB alert
- The range of operation is typically 5-10 NM, depending on antenna heights. Frequency is UHF/VHF and output 5W



Track Control System

In combination with the versatile Alphanon ALPHASEAPILOT MFA a type approved track control system is available. Operation could be done via the autopilot control unit or optionally via a unique LAN interface.



Better Than Ever Positioning Information

ALPHACHART T automatically provides the navigator with all the necessary information:

- Current ship position and motion vector's
- Fallback modes through various positioning systems and methods
- Reception of information from the radar/ARPA and AIS for handling of targets
- Data obtained from other connected navigational sensors
- Display of the ship contour as per the set parameters and chart scale



Transas Electronic Chart Solutions

Transas provides the 'one-stop shop' chart solutions, offering a complete range of official and non-official charts. Transas is an official distributor of S-57 charts and charts in SECC format

(System Electronic Navigation Charts) from the world main

ENC providers: IC-ENC, Primar Stravange and NOAA. Transas SEC Distribution Service was fully tested and approved by DET Norske Veritas (DNV) in June 2004.

Transas TX-97 electronic chart collection consists of more than 12,000 charts providing the world wide coverage for the navigator and is updated with the Notices to Mariners issued by the Hydrographic Organisation of different countries.

To update TX-97 and SENC vector electronic charts, it is possible to use Transas unique Chart Assistant (CA) utility. The first of it's kind in the industry, the Chart Assistant (CA) utility. The first of it's kind in the industry, the Chart Assistant utility can use a variety of media to order or update your charts in TX-97 or SECC format:

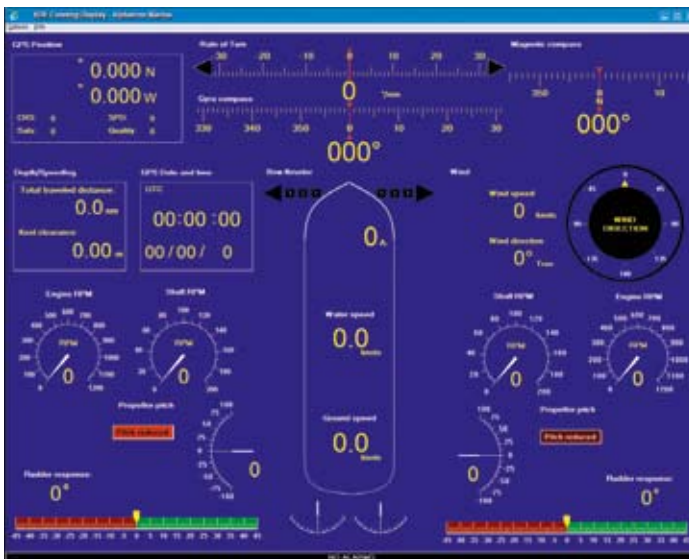
- CD- quarterly delivery of an updated chart collection
- USB Flash – updates are downloaded manually from official web-site www.transas.com
- E-mail – ordering and updating charts form Transas Chart Server automatically online

Transas provides an online maintenance service for charts in TX-97 and SEC formats. Charts in S-57/ENC, SEAFARER ARCS, BSB/NDI, NOS/GEO formats could be installed and updated from CD or other removable data storage.

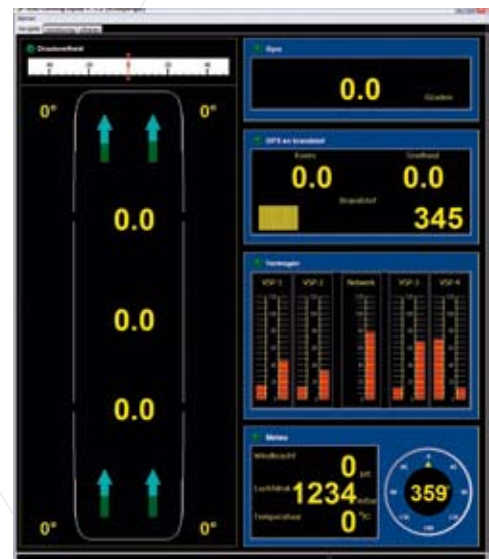


**ALPHACHART
RIVER**

Alphatron ALPHACON conning information system



ALPHACON system, a fully customised conning information system. Available stand alone or fully integrated with ALPHASPEED and the ALPHACHART systems.



Satellite based speed information system for speed fore, aft and along ship. Derived from dual satellite antenna one on the fore and one on the aft ship.



ALPHATRON

Alphatron Marine

Alphatron Marine B.V.
Harbour 115
Schaardijk 23
3063 NH Rotterdam
The Netherlands

T +31 (0)10 453 4000
F +31 (0)10 452 9214

P.O. Box 21003
3001 AA Rotterdam

deepsea@alphatronmarine.com
www.alphatronmarine.com